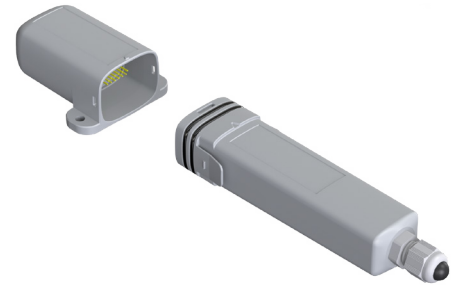


Flex2-ES LWEU/LWNA

Transmitter

The Flex2 series is a multipurpose weatherproof LoRaWAN transmitter series with several input options for various needs of industrial measurement and monitoring. The LoRaWAN radio offers a long range, especially outdoors, and connectivity to all standard LoRaWAN systems.

Flex2-ES LWEU/LWNA measures temperature with an external sensor connected to a spring-loaded connector inside the transmitter. The sensor is not supplied, but a thermocouple or a RTD sensor can be used.



Applications



Industry

Product highlights and features

High measurement accuracy and reliability

Weatherproof

The LoRaWAN radio offers a long range, especially outdoors, and connectivity to all standard LoRaWAN systems

Flex2-ES LWEU/LWNA

Transmitter



Environment

| | |
|-----------------------|------------------|
| Operating temperature | -30...+60 °C |
| Operating humidity | 0-100 %RH |
| Protection class | IP65 |
| Enclosure material | Plastic (PC+ABS) |

Measurements

| | |
|-------------|--|
| Dimensions | Width 60 mm, depth 32.5 mm, height: 197.3 mm |
| Weight | Radio modules: 35g Measurement modules: 70g (slight variation between Flex2 models) |
| Cable gland | M12x1.5 |

Measuring and data transmission

| | |
|----------------------|--|
| Measure interval | Configurable: 0..14400s |
| Radio | LoRa radio technology with Murata ABZ-093 LoRaWAN modem |
| Antenna | Internal |
| Frequency band | EU868: 863-870 MHz / US915: 902-928 MHz |
| Transmission power | Max +14 dBm E.R.P. |
| Range, line-of-sight | Depends on installation location and environment, in good conditions 10 km |

Power supply

| | |
|----------------------|---|
| Batteries | 3.6V Lithium Thionyl battery pack |
| Typical battery life | With a good radio link and 5 min measurement interval, typically 5 years With an average radio link and 30 min measurement interval, typically 5 years With a bad radio link and 30 min measurement interval, typically 3 years |

ES module

| | |
|--------------------|--|
| Sensor type | RTD |
| Cable length | < 30 m |
| Measurement range | -200...+650°C |
| Accuracy | Accuracy 0.05% rdg + 0.2 °C at 25 °C ambient |
| Thermal drift | 0.01 °C/°C |
| Sensor type | Thermocouple |
| Cable length | < 30 m |
| Measurement range | mV: -30...2000mV |
| Linearity error | TcB: 400...1700 °C (0.3 °C), TcC: 0...2300 °C (0.5 °C) TcD: 0...2300 °C (1 °C), TcE: -100...900 °C (0.2 °C) TcG: 1000...2300 °C (2 °C), TcJ: -160...950 °C (1 °C) TcK: -150...1370 °C (0.5 °C), TcL: -150...900 °C (0.5 °C) TcN: 0...1300 °C (0.1 °C), TcR: 0...1700 °C (0.5 °C) TcS: 0...1700 °C (0.5 °C), TcT: -200...400 °C (1 °C) |
| Accuracy | Typically ±1.0°C over +0...+100 °C |